

direct

PRODUCTS

NEW
RELEASE!
COMMERCIAL

ROLL-OUT/LIFT-UP TOP STEEL UNDERBED STORAGE LOCKER



Shown with Commercial Balmoral Bed with Optional Easy-Move Glides



Six Heavy Duty Castors with Steel Cross Beams



Padlockable for High Security



Optional Roll-Out/Lift-Up Top Underbed Storage Locker



Full Width Heavy Duty Piano Hinge

Features

- The most efficient and practicable storage solution for compact spaces
- All steel fabricated rigid frame
- Easy roll-out and access via full width front grip handle and six heavy duty castors
- Easy steel lift-up lid for easy/total access to entire locker
- Padlockable for maximum security
- Powder coated finish
- Heavy duty steel under beams provides substantial weight load rating
- Heavy duty piano hinge to lift-up top – ensuring long term durability
- Perfect solution for all types of storage requirements
- Customised lockers to specific dimensions are available
- Wide choice of colours available
- **Proudly made in Australia**

Specifications

Code	Colour
DP9900	Silver
DP9955	Black
DP9977	Cream

Dimensions

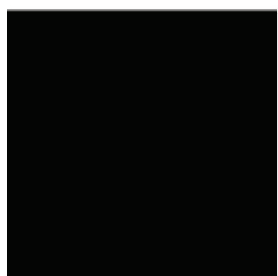
Length	Width	Height
750 mm	1200 mm	383 mm

For more information please email sales@directproducts.net.au

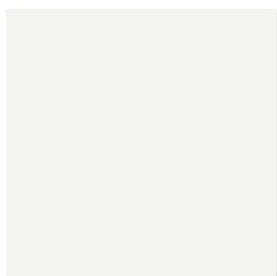
www.directproducts.net.au

COLOUR PALLETE

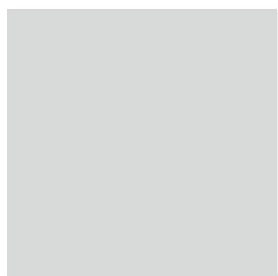
Standard Colour Range



Black Satin



White Satin



Silver Grey



Graphite Ripple



Wild Oats

Extended Colour Range



Lawn Green



Blaze Blue



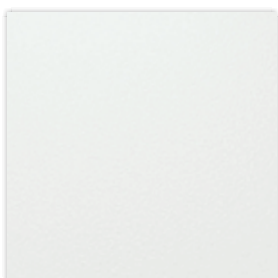
Signal Red



X15 Orange



Lemon Yellow



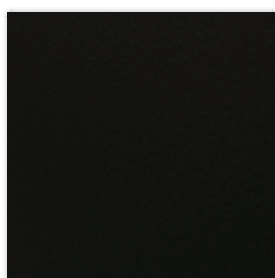
White Ripple



Beige Ripple



Silver Pearl



Black Ripple