

# LAMINEX® COMMERCIAL PALETTE

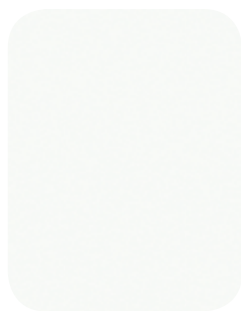


Laminex®  
Inspire your space

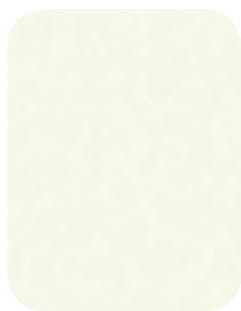


Create tailored, beautiful and inspired spaces with the Laminex® Commercial Palette. This comprehensive range of decors has been specially selected for today's office, hospitality, aged care and retail spaces. It is available in cost effective 1800mm wide panels, with thicknesses of 18mm, 25mm and 33mm, in your choice of MDF, Structural MDF or Particleboard. All decors are available with matching 22mm, 29mm or 38mm ABS edging. Integrating with the wider Laminex range, including Laminex Compact Laminate and Impressions™ textured surfaces, this range will help you create seamless schemes that are always on trend.

## CORE RANGE



Polar White + Δ ‡



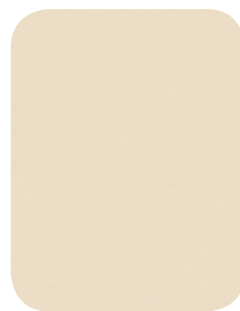
White Δ ‡



Parchment + Δ ‡



New Antique White



Moleskin



Zincworks + Δ



Oyster Grey +



Paper Bark



Oyster Linea + ‡



Seasoned Oak + Δ



Dansk Maple



Young Beech



Curly Birch



Select Beech



Red Cherry



Stipple Seal +



Fossil + Δ ‡



Licorice Linea + Δ



Charcoal + Δ



Black +

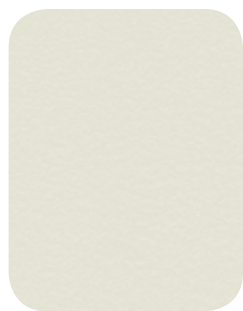


New Graphite + ‡

The Laminex Commercial Palette range integrates seamlessly with our Compact Laminate and Impressions textured surfaces range of colours, allowing customers to mix and match substrates on a single job for maximum cost efficiency. Refer to individual product brochures for more information.



## EXTENDED RANGE



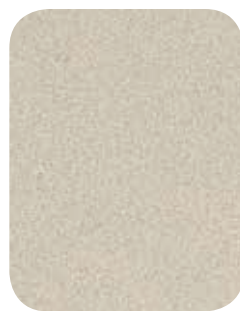
Ash White  $\Delta$



Sarsen Grey



Alaskan  $+$   $\ddagger$



Platinum Micro  $+$



Baye  $+$   $\Delta$   $\ddagger$



Pumice  $+$   $\Delta$   $\ddagger$



Classic Beige



Peruvian Clay



Mushroom Linea  $\Delta$



Stipple Cocoa



Silver Grey



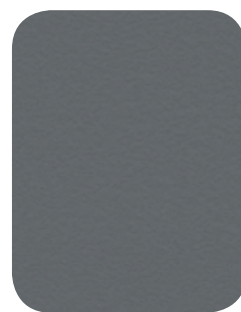
Stipple Smoke



Lustrous Elm  $+$   $\ddagger$



Moose  $+$   $\ddagger$



Gunmetal



Amari Oak  $\Delta$



Wild Birch



Milano Walnut



Wenge



Ebony Macassar



Juicy  $+$   $\ddagger$



Olympia Yellow  $+$   $\ddagger$



Mandarin  $+$   $\ddagger$



Pillarbox  $+$   $\ddagger$



Olympia Blue  $+$

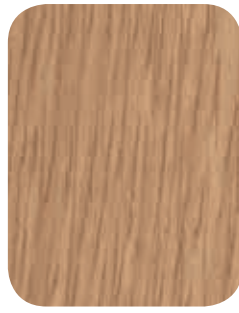
$+$  Denotes the standard colour offer for Laminex Multipurpose Compact Laminates. See the Laminex Compact Laminates brochure for further details.  $\Delta$  Denotes this colour is also available in Laminex Impressions Riven finish.  $\ddagger$  Denotes this colour is also available in Laminex Impressions Nuance finish. See the Laminex Impressions textured surfaces brochure for further details.



Rock Maple



Silver Ash



Elegant Oak Δ  
**NEW**



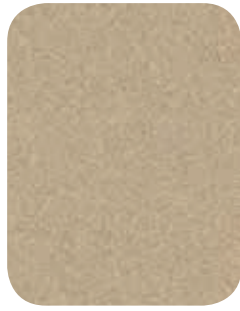
Sublime Teak + Δ



Natural Zebrano ‡



Milkwood



Stipple Hemp



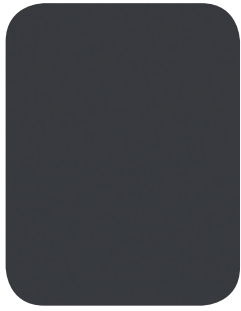
Pesto Linea



Tawny Linewood + ‡



Jericho + ‡



Battalion +



Espresso Δ



Espresso Ligna ‡



Blackened Linewood + ‡



Burnished Wood ‡

## GREENFIRST®

Greenfirst® is Laminex Australia's commitment to the environment. At the forefront of design and innovation for interior surfaces, Laminex offers products that can assist with Green Building Council of Australia (GBCA) Green Star® rated projects. Recognising the importance of Indoor Environmental Quality (IEQ) in projects, Laminex offers a range of low formaldehyde products and low Volatile Organic Compound (VOC) products. Laminex has made the environmental choice to transition their Decorwood® (Standard MDF) and Structural MR® (Moisture Resistant MDF) from E1 to E0, whilst Vertiboard® (Standard Particleboard) has the option of E1 and E0. All Laminex Decorwood, Structural MR and Vertiboard E0 have achieved Ecospecifier Global GreenTag® GreenRate Level A and LCARate PLUS Gold, dual certification. The Global GreenTag® program is one of Australasia's most respected environmental certifications and Level A is the highest level recognised in the GBCA Green Star Materials Calculator. This is combined with the valuable LCARate Gold – a fully audited, Life Cycle Assessment based certification program that helps designers and specifiers differentiate between products using trusted Bronze, Silver, Gold or Platinum ratings and detailed Sustainability Assessment Criteria (SAC) and EcoPOINT scores. The SAC scores for Embodied Carbon show these Laminex products to be carbon sinks. For Timber Certifications, all Laminex Decorwood, Structural MR and Vertiboard E0 are AFS/PEFC CoC\* certified, whilst a selection of Laminex Decorwood products possess FSC® CoC^ certification. Please enquire when ordering.

\*Australian Forestry Standard / Programme for the Endorsement of Forest Certification Schemes (AFS/PEFC) Chain of Custody (CoC).

^Forest Stewardship Council® (FSC®) Chain of Custody (CoC).



## PANELS

	CORE RANGE E1		EXTENDED RANGE E1		CORE RANGE EO		EXTENDED RANGE EO	
<b>DELIVERY LEAD TIME</b>								
<b>DECORWOOD®</b> <b>(STANDARD EO MDF)</b>  2400 x 1800 x 18mm 2400 x 1800 x 25mm	Natural or Flint finish	N/A		N/A		Ex stock Melbourne, Sydney and Brisbane Minimum 1 sheet Max 7 days all other areas (pack quantities) <sup>†</sup>		Ex plant stock Minimum 1 pack Max 20 days plus transport <sup>†</sup>
	Riven or Nuance finish	N/A		N/A		Ex plant stock Minimum 1 pack Max 10 days plus transport <sup>†</sup>		Ex plant stock Minimum 1 pack Max 20 days plus transport <sup>†</sup>
<b>VERTIBOARD®</b> <b>(STANDARD PARTICLEBOARD)</b>  3600 x 1800 x 18mm 3600 x 1800 x 25mm 3600 x 1800 x 33mm	Natural or Flint finish	Ex stock Melbourne, Sydney and Brisbane Minimum 1 sheet Max 7 days all other areas (pack quantities)		Ex plant made to order Minimum 1 sheet Max 10 days plus transport		Ex plant made to order Minimum 1 pack Max 10 days plus transport <sup>†</sup> Check with your state for availability		Ex plant made to order Minimum 1 sheet Max 10 days plus transport <sup>†</sup>
	Riven or Nuance finish	Ex plant made to order Minimum 1 pack Max 10 days plus transport <sup>†</sup>		Ex plant made to order Minimum 1 sheet Max 10 days plus transport <sup>†</sup>		Ex plant made to order Minimum 1 pack Max 10 days plus transport <sup>†</sup>		Ex plant made to order Minimum 1 sheet Max 10 days plus transport <sup>†</sup>
<b>STRUCTURAL MR®</b> <b>(MOISTURE RESISTANT EO MDF)</b>  3600 x 1800 x 18mm 3600 x 1800 x 25mm 3600 x 1800 x 32mm	Natural or Flint finish	N/A		N/A		Ex stock Melbourne, Sydney and Brisbane Minimum 1 sheet Max 7 days all other areas (pack quantities) <sup>†</sup> Check with your state for availability		Ex plant made to order Minimum 1 sheet Max 10 days plus transport <sup>†</sup>
	Riven or Nuance finish	N/A		N/A		Ex plant stock Minimum 1 pack Max 10 days plus transport <sup>†</sup>		Ex plant made to order Minimum 1 sheet Max 10 days plus transport <sup>†</sup>

<sup>†</sup>WA customers - Please refer to the WA availability guide for exact lead times. Check availability guide for finish options.

## EDGING

	CORE RANGE AND EXTENDED RANGE				
<b>ABS EDGING</b>	Rolls	25 metres and 100 metres	25 metres and 100 metres*	100 metres*	100 metres*
	Thickness	1mm	2mm	2mm	2mm
	Width	21mm	22mm	29mm	38mm
<b>MELAMINE EDGING</b> <b>(PRE-GLUED ONLY)</b>	Rolls	25 metres	100 metres		
	Width	22mm	22mm		


Check with your local branch for availability.

\*Not a stock item in all areas, lead times may apply.





**Laminex®**  
Inspire your space

 For more inspiration join us on [facebook.com/thelaminexgroupau](https://facebook.com/thelaminexgroupau)

For a sample call 1800 002 204. For more information visit [laminex.com.au](http://laminex.com.au) or call 132 136.

Laminex Commercial Palette is manufactured, marketed and distributed by Laminex Group Pty Limited ABN 98 004 093 092, trading as Laminex. In some cases, Laminex uses computer generated imagery (CGI) to provide graphical representations of our products where actual photos are not available. The colours and finishes of the products featured within all Laminex imagery are as close to the Laminex range as CGI, photographic lighting and our printing processes allow. Different camera angles, although not designed to be misleading, can sometimes distort actual size and distances. Laminex Commercial Palette is no different than any other material in that darker colours will always show scratches and superficial wear and tear more readily than lighter colours. Laminex Commercial Palette should be protected from strong, direct sunlight as continuous exposure may cause discolouration or fading to the surface. Please obtain a copy of the terms and conditions of the Laminex Commercial Palette 7 year limited warranty from [laminex.com.au](http://laminex.com.au). This warranty is in addition to any rights that may exist under the Australian Consumer Law. Laminex®, Impressions™, Decorwood®, Greenfirst®, Structural MR®, Vertiboard®